

ASSEMBLY INSTRUCTIONS

**TAO DINING TABLE**

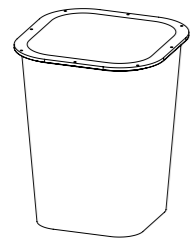
01666-x

Tribù nv  
Oude Heidestraat 72  
3740 Bilzen  
BELGIUM

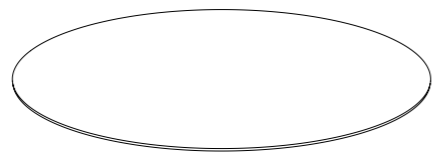
[www.tribu.com](http://www.tribu.com)  
[info@tribu.com](mailto:info@tribu.com)

**TRIBÙ**  
The art of leisure

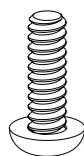
## CONTENT



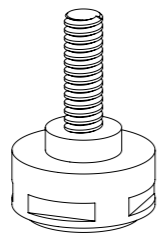
1 x  
Base



1 x  
Top



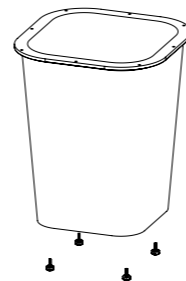
8 x  
Screw



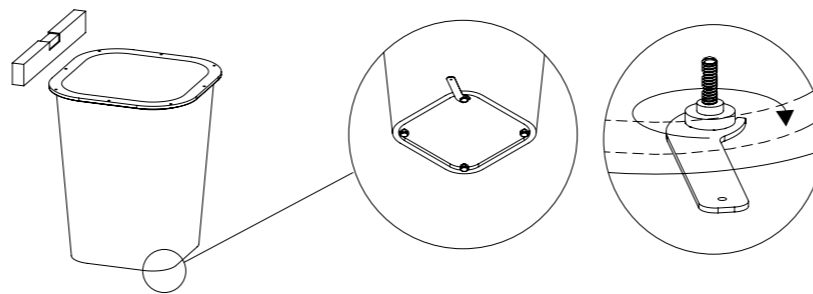
4 x  
Adjustable glider

## ASSEMBLY INSTRUCTIONS

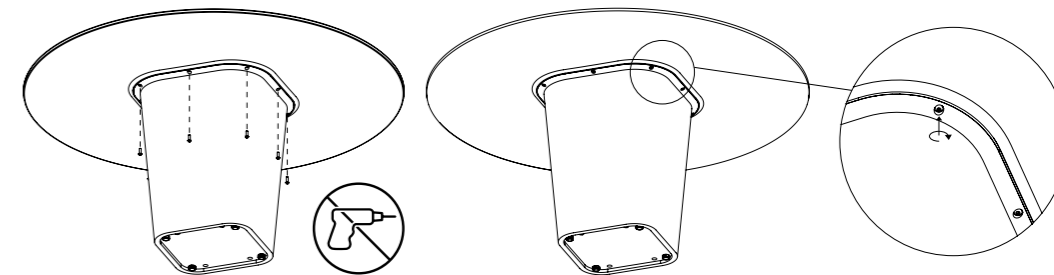
- 1** Attach the 4 adjustable gliders to the bottom of the base.



- 2** Place the base in the desired position and make sure that it is level. If not, use the provided tool to adjust the gliders.



- 3** Place the top on the base. Place the screws in the holes and **tighten them by hand**. **Don't use a power tool. Make sure the bolts are tightened crosswise to ensure a flush and rigid connection between the top and the base.**



**Attention:** Never move the table when it is assembled. In case the table has to be moved to a new location, always dismantle the top from the base to avoid damages.